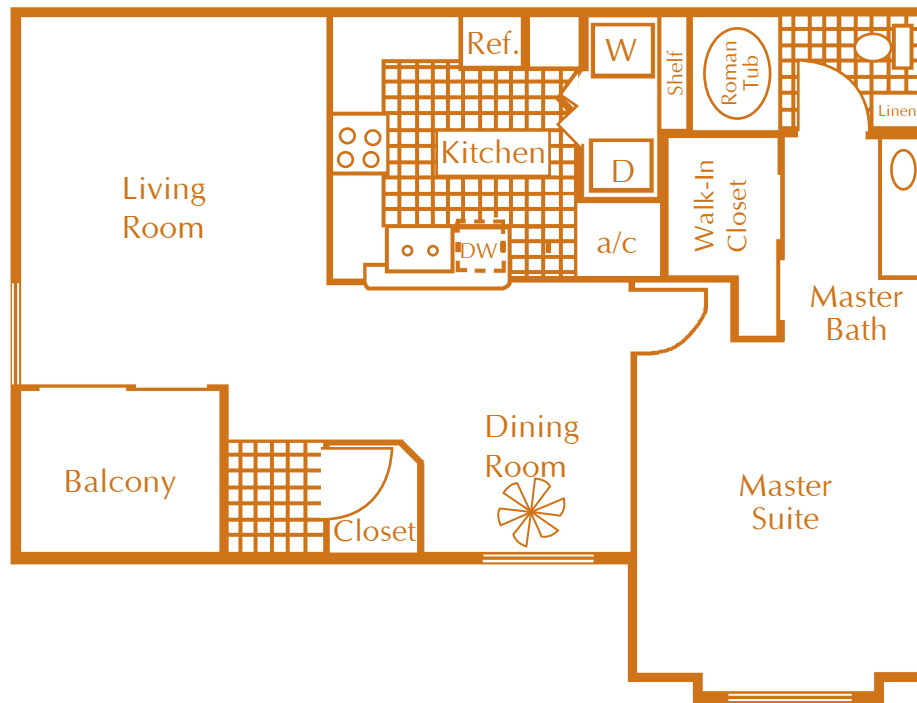


Manatee Bay

1 Bedroom 1 Bath

983 Square Feet

Starting at \$1,015



INTERIOR FEATURES

- **INTRACOASTAL AND LAKEFRONT VIEWS AVAILABLE**
- **SPACIOUS 1,2 &3 BEDROOM APARTMENT HOMES**
- **2 BEDROOM APARTMENT HOMES WITH ATTACHED GARAGE**
- **AUTOMATED GATE ACCESS**
- **INDIVIDUAL ENTRANCES**
- **FULLY APPOINTED KITCHEN**
- **FULL SIZE WASHER AND DRYER**
- **DECORATIVE CERAMIC TILE ENTRY, KITCHEN AND BATH**
- **CEILING FAN IN DINING AREA**
- **MARBLE ROMAN TUB**
- **SPACIOUS WALK IN CLOSET**
- **SCREENED PATIO OR BALCONY**

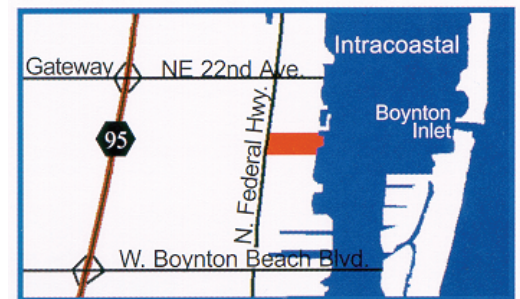
INTRACOASTAL FEATURES

- **PRIVATE WHITE SAND BEACH**
- **WATERFRONT POOL AND BAR**
- **BBQ AREA**
- **SPECTACULAR VIEWS AVAILABLE**

PRICES SUBJECT TO CHANGE WITHOUT NOTICE

RECREATIONAL FEATURES

- **MARINA WITH BOAT SLIPS AVAILABLE**
- **DIRECT BOAT ACCESS TO THE BOYNTON INLET**
- **GRAND SALON LOCATED ON THE INTRACOASTAL**
- **MEDIA CENTER WITH GAME TABLES**
- **STATE OF THE ART FITNESS CENTER**
- **HISTORIC NATURE PRESERVE WITH SCENIC WALKING TRAIL**



MON, WED & FRI: 8AM-6PM

TUES & THURS: 8AM-8PM

SAT & SUN: 9AM-6PM

MANATEE BAY

**1632 NORTH FEDERAL HIGHWAY
BOYNTON BEACH, FLORIDA 33435**

PHONE: 561.735.4141

FAX: 561.691.0329

WWW.MANATEEBAYAPARTMENTS.COM